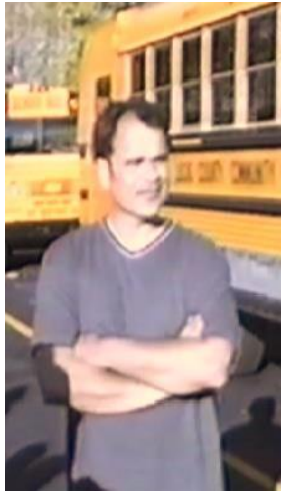


# School Bus Safety Report Card

Steve Gardner  
Founder/President  
Gardian Angel, LLC

[www.GardianAngelLLC.com](http://www.GardianAngelLLC.com)

# Qualifications of Presenter



- 20 years of experience as an ASE certified school bus mechanic
- 15 years of experience as a transportation supervisor
- Credited with organizing the first mock school bus disaster in the state of Ohio in 1996, which involved mentally and physically challenged individuals
- Inventor of the patented Guardian Angel® School Bus Safety Lighting System



Steve Gardner

(419)693-8854

Helpdesk.Guardian.Angel@Gmail.com

[www.GuardianAngelLLC.com](http://www.GuardianAngelLLC.com)

[Patent # US 8,669,853 B1](#)

# Top Safety Concerns When Boarding the School Bus

- Illegal school bus passing
- Distracted drivers
- Poor visibility



# Sobering Fact: 119

- “From 2003 to 2012, 174 school-age children died in school-transportation related crashes, 55 were occupants of school transportation vehicles and **119 were pedestrians.** “



**Focusing on the pedestrians: if each child’s life represents one floor in a building, it would exceed the tallest building in the western hemisphere, One World Trade Center, which soars above the city skyline at 104 stories.**

Compare that to the 119 stories that were taken away from their families too soon.

[NHTSA 2003 - 2012 Data \(Revised June 2014\)](#)

# What's the Law for Passing a Stopped School Bus in IN?



- You must stop when you approach a school bus with flashing red lights activated and stop arm extended. If you are driving on a highway that is divided by a barrier or unimproved median, you are required to stop only if you are traveling in the same direction as the school bus. You do not have to stop if you and a school bus are traveling in opposite directions on a road that has more than two lanes and is separated by a median strip not for vehicle travel.

[State Laws](#)

# Do You Know Where the Stop Arm Violations are Occurring?

- “Of the 75,966 stop-arm violations counted, **98%** were on the **left side** of the school bus (the driver’s side).”
- “More vehicles passed from the **front (58%)** than from the rear (42%)”



# Prior to 2000

- From 1979 – 1999 in Indiana there were **10** children fatalities in the loading zone of a bus.



[Kansas Department of Education/ School Bus Safety Unit](#)

# Continued Reports of Fatalities

- 2004 - 2005 Indiana: **1 fatality**

[2004 - 2005 National School Bus Loading & Unloading Survey](#)

- 2006 - 2007 Indiana: **1 fatality**

[2006 - 2007 National School Bus Loading & Unloading Survey](#)

- 2008 – 2009 Indiana: **3 fatalities**

[2008 - 2009 National School Bus Loading & Unloading Survey](#)

- 2012 – 2013 Indiana: **1 fatality**

[2012 - 2013 National School Bus Loading & Unloading Survey](#)



# Fatality Excerpt

- Indiana: An 8-year-old male was crossing the road to board his bus. The driver of an approaching vehicle stated that the bus had the amber lights flashing, but she was plugging in her cell phone. By the time she saw the boy, it was too late and she struck and killed him. It was still dark out.



[2012 - 2013 National School Bus Loading & Unloading Survey](#)

# Recommendation for Indiana

## The patented Gardian Angel® School Bus Safety Lighting System

- Warns motorists to pay attention while the stop arm is out
- Alerts drivers that students are crossing
- Traffic can clearly see children boarding
- Students can see where they step to prevent falls
- Keeps children safe and out of the “danger zone”
- Illuminates through inclement weather, extreme climate change, even creates a visible path in daylight



[Patent #US 8,669,853 B1](#)

# What is the Gardian Angel®?

- See our promotional video and more at [www.GardianAngelLLC.com](http://www.GardianAngelLLC.com)

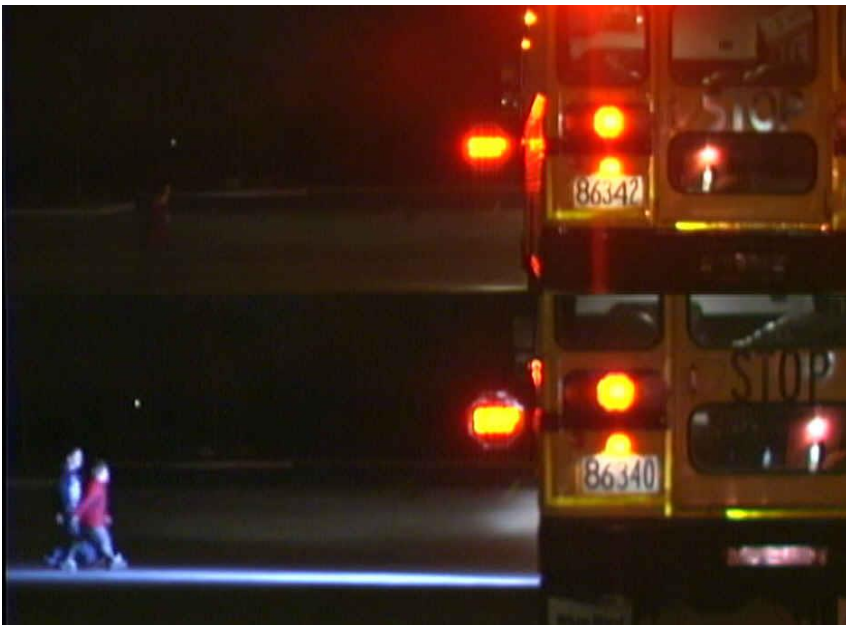


# About the System



- The lighting system works with any type of bus (A/C/D) and installation can typically take under thirty minutes.
- The lighting system even works on buses equipped with multiplex wiring.
- There are no additional switches for the driver to operate. The system automatically turns on when the red lights are activated, and turn off when the entrance door of the bus is closed.

# Consider This



- Stop sign cameras are infrared. In darkness, every car is gray in color.
- The Gardian Angel® can show the camera the actual color of the offending vehicle, which is required in some states in order to prosecute.

# Special Notes

- The Guardian Angel® has already been tested in Indiana for over a year (spring 2012 – given permission for a 12 month trial on 4 buses)
- School in Indiana testing the system wrote an article about the Guardian Angel® and mentioned the positive comments from bus drivers and parents. (Sept. 2013)

# Specifications



- DOT SAE lens markings ensures peace of mind during vehicle inspections.
- IP 67 certified with O-ring sealed construction – extra protection from dust & water immersion.
- It operates in temperatures of -40 to +65 degrees Celsius.
- Current draw is 1.66 Amps at 12.8 VDC.

# Effectiveness of the System



- Preliminary data from field test in WY revealed at least a 50% reduction of coal trucks running the school bus red lights on a major road.
- Data after completion of the pilot study in WY revealed only one vehicle running a driver's red lights since installing the lighting system.
- The pilot was deemed a success and we were given state approval.



# Endorsements



- Gardian Angel® is endorsed by the **Michigan Association for Pupil Transportation.**
- We have numerous customer surveys that display the driver's positive opinions of the system.
- Entire fleets are now using our technology.

# States Allowing the Gardian Angel ®



- **Michigan** (2013)
- **Wyoming** (June 2014)
- **Mississippi** (Aug. 2014)
- **Vermont** (Oct. 2014)
- **North Carolina** (Nov. 2014)
- **Nevada** (Dec. 2014)
- **Colorado** (Dec. 2014)
- **Nebraska** (Jan. 2015)
- **New Jersey** (Jan. 2015)
- **Wisconsin** (Jan. 2015)
- **Missouri** (Jan. 2015)
- **Texas** (Jan. 2015)
- **Alaska** (Jan. 2015)
- **Idaho** (April 2015)

# Ordering Information



*Unity*  
SCHOOL BUS PARTS

**NICHOLAS E. MASTRY**  
General Manager

**1-800-937-3906**

(810) 765-4444 • Fax (810) 765-2835

CELL PHONE (586) 615-0807 • [www.unityparts.com](http://www.unityparts.com)

6221 KING ROAD • MARINE CITY, MI 48039

Thank you!