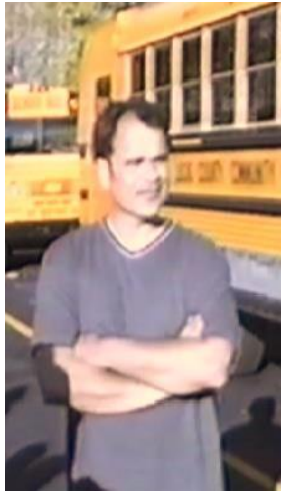


School Bus Safety Report Card

Steve Gardner
Founder/President
Gardian Angel, LLC

www.GardianAngelLLC.com

Qualifications of Presenter



- 20 years of experience as an ASE certified school bus mechanic
- 15 years of experience as a transportation supervisor
- Credited with organizing the first mock school bus disaster in the state of Ohio in 1996, which involved mentally and physically challenged individuals
- Inventor of the patented Guardian Angel® School Bus Safety Lighting System



Steve Gardner

(419)693-8854

Helpdesk.Guardian.Angel@Gmail.com

www.GuardianAngelLLC.com

[Patent # US 8,669,853 B1](#)

Top Safety Concerns When Boarding the School Bus

- Illegal school bus passing
- Distracted drivers
- Poor visibility



Sobering Fact: 119

- “From 2003 to 2012, 174 school-age children died in school-transportation related crashes, 55 were occupants of school transportation vehicles and **119 were pedestrians.** “



Focusing on the pedestrians: if each child’s life represents one floor in a building, it would exceed the tallest building in the western hemisphere, One World Trade Center, which soars above the city skyline at 104 stories.

Compare that to the 119 stories that were taken away from their families too soon.

[NHTSA 2003 - 2012 Data \(Revised June 2014\)](#)

What's the Law for Passing a Stopped School Bus in KY?



- When you come to a school or church bus that is stopped on any roadway to load or unload passengers, you must STOP. By law you must remain stopped until all people are clear of the roadway and the bus is in motion. A stop is NOT required when approaching a stopped bus from the opposite direction upon a highway of four or more lanes.

State Laws

Do You Know Where the Stop Arm Violations are Occurring?

- “Of the 75,966 stop-arm violations counted, **98%** were on the **left side** of the school bus (the driver’s side).”
- “More vehicles passed from the **front (58%)** than from the rear (42%)”



Prior to 2000

- From 1979 – 1999 in Kentucky there were **17** children fatalities in the loading zone of a bus.



[Kansas Department of Education/ School Bus Safety Unit](#)

Recommendation for Kentucky

The patented Gardian Angel® School Bus Safety Lighting System

- Warns motorists to pay attention while the stop arm is out
- Alerts drivers that students are crossing
- Traffic can clearly see children boarding
- Students can see where they step to prevent falls
- Keeps children safe and out of the “danger zone”
- Illuminates through inclement weather, extreme climate change, even creates a visible path in daylight



[Patent #US 8,669,853 B1](#)

What is the Gardian Angel®?

- See our promotional video and more at www.GardianAngelLLC.com

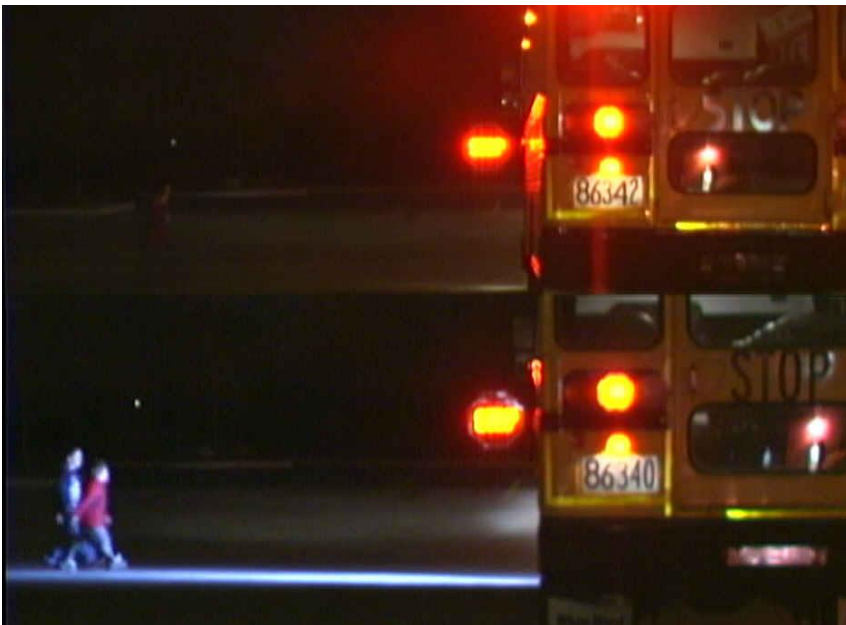


About the System



- The lighting system works with any type of bus (A/C/D) and installation can typically take under thirty minutes.
- The lighting system even works on buses equipped with multiplex wiring.
- There are no additional switches for the driver to operate. The system automatically turns on when the red lights are activated, and turn off when the entrance door of the bus is closed.

Consider This



- Stop sign cameras are infrared. In darkness, every car is gray in color.
- The Gardian Angel® can show the camera the actual color of the offending vehicle, which is required in some states in order to prosecute.

Specifications



- DOT SAE lens markings ensures peace of mind during vehicle inspections.
- IP 67 certified with O-ring sealed construction – extra protection from dust & water immersion.
- It operates in temperatures of -40 to +65 degrees Celsius.
- Current draw is 1.66 Amps at 12.8 VDC.

Effectiveness of the System



- Preliminary data from field test in WY revealed at least a 50% reduction of coal trucks running the school bus red lights on a major road.
- Data after completion of the pilot study in WY revealed only one vehicle running a driver's red lights since installing the lighting system.
- The pilot was deemed a success and we were given state approval.

Endorsements



- Gardian Angel® is endorsed by the **Michigan Association for Pupil Transportation.**
- We have numerous customer surveys that display the driver's positive opinions of the system.
- Entire fleets are now using our technology.

States Allowing the Guardian Angel ®



- **Michigan** (2013)
- **Wyoming** (June 2014)
- **Mississippi** (Aug. 2014)
- **Vermont** (Oct. 2014)
- **North Carolina** (Nov. 2014)
- **Nevada** (Dec. 2014)
- **Colorado** (Dec. 2014)
- **Nebraska** (Jan. 2015)
- **New Jersey** (Jan. 2015)
- **Wisconsin** (Jan. 2015)
- **Missouri** (Jan. 2015)
- **Texas** (Jan. 2015)
- **Alaska** (Jan. 2015)
- **Idaho** (April 2015)

Ordering Information



Unity
SCHOOL BUS PARTS

NICHOLAS E. MASTRY
General Manager

1-800-937-3906

(810) 765-4444 • Fax (810) 765-2835

CELL PHONE (586) 615-0807 • www.unityparts.com

6221 KING ROAD • MARINE CITY, MI 48039

Thank you!